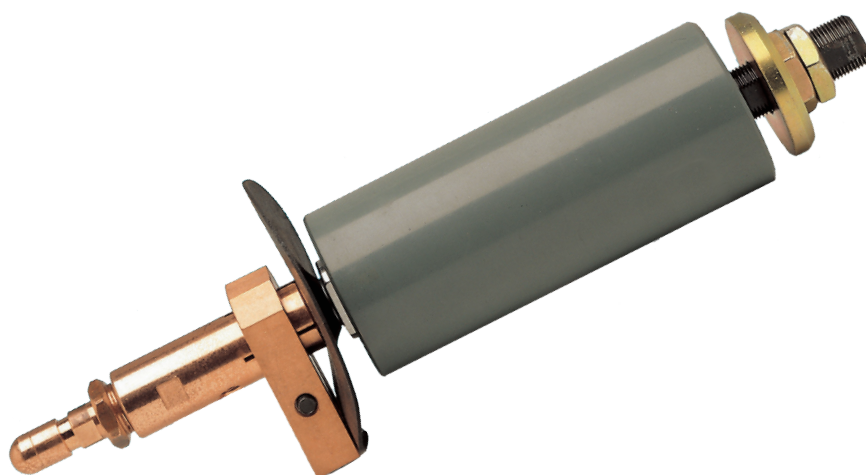




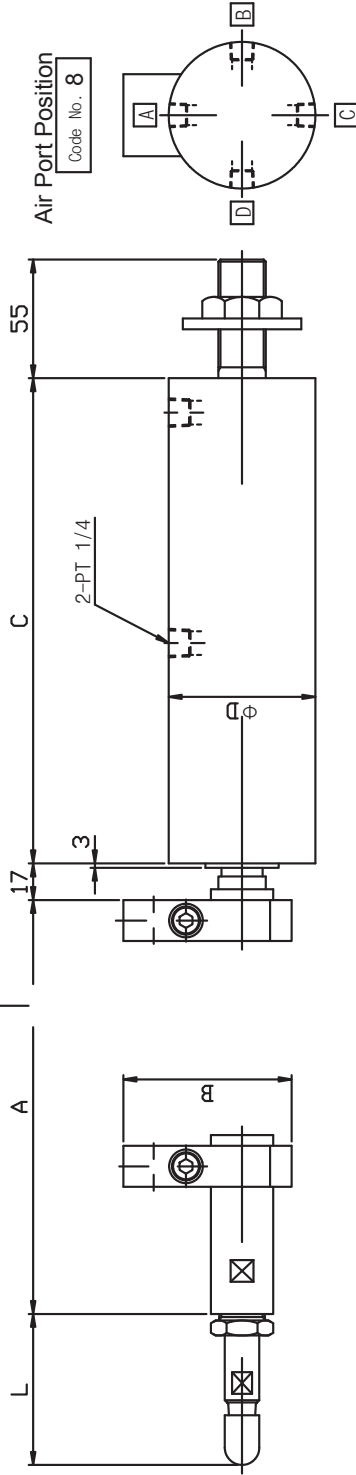
ST TYPE



S1-1 STUD TYPE GUN

S1-1

Code No. 4
Code
0



Air Port Position
Code No. 8



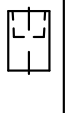

Code No. 5	Type
Code	
A	
AF	
AR	

Table of Dimensions & Codes of Point holder Components

Code No. 2			
Code	A	B	
A1	83	78	Φ16 (Φ13) CAP TIP
A2	83	91	
A3	85	78	Φ19 CAP TIP
A4	85	91	
B1	82.5	95	
B2	89	95	

Rod Side Tip Type

Code No. **3**

Code	Type
D	
R	
F	
E	

Code No. **1**

Code	L
040	40 mm
050	50 mm
060	60 mm
070	70 mm
080	80 mm
090	90 mm
100	100 mm
110	110 mm
120	120 mm
130	130 mm
140	140 mm
150	150 mm

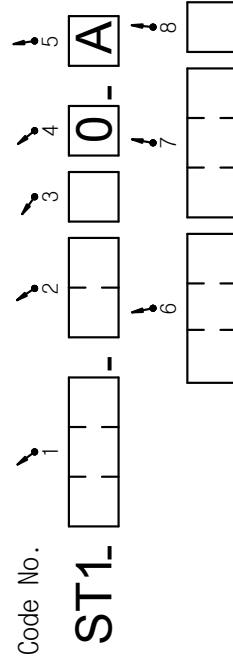
Cylinder & Electrode Force

Code No. **6**

Area (cm ²)	φD (mm)	Air Force (kg/cm ²)	
		5	8
036	60	140	230
044	67	170	275
054	70	210	-
060	71	230	-
074	80	290	-
098	90	380	-

Code No. **7**

Code	C
038	174
050	198
063	224
076	250
102	302
127	352
152	402

Code No. **ST1-**


S1-2

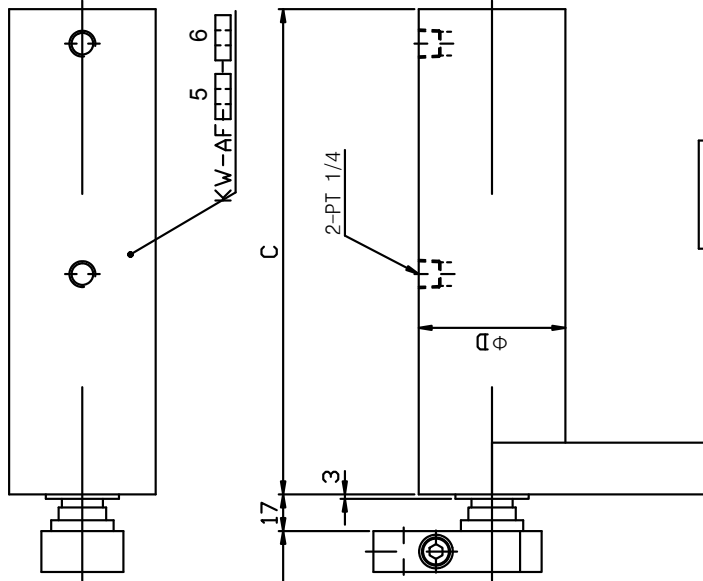
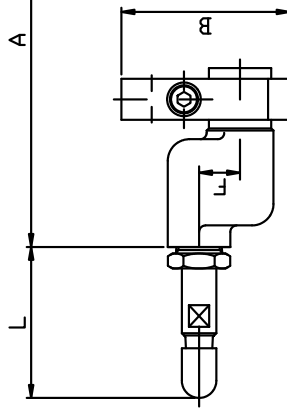
S1-2

S1-3 STUD TYPE GUN

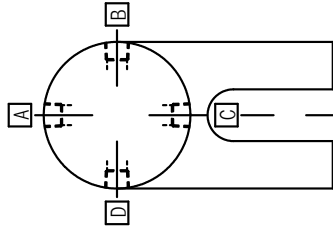
S1-3

Code No. 4

Code	F
3	13 mm
9	19 mm



Air Port 위치
Air Port Position
Code No. 8



Code No. 5

Code	Type
A	
AF	
AR	

Table of Dimensions & Codes of Point holder Components

Code No. 2

Code	A	B
C1	83	78
C2	83	91
D1	81.5	95
D2	89	95

$\phi 16$ ($\phi 13$)
CAP TIP

$\phi 19$
CAP TIP

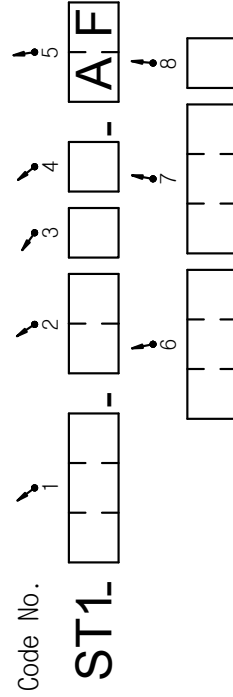
Cylinder & Electrode Force

Code No. **7**

Code	C
038	174
050	198
063	224
076	250
102	302
127	352
152	402

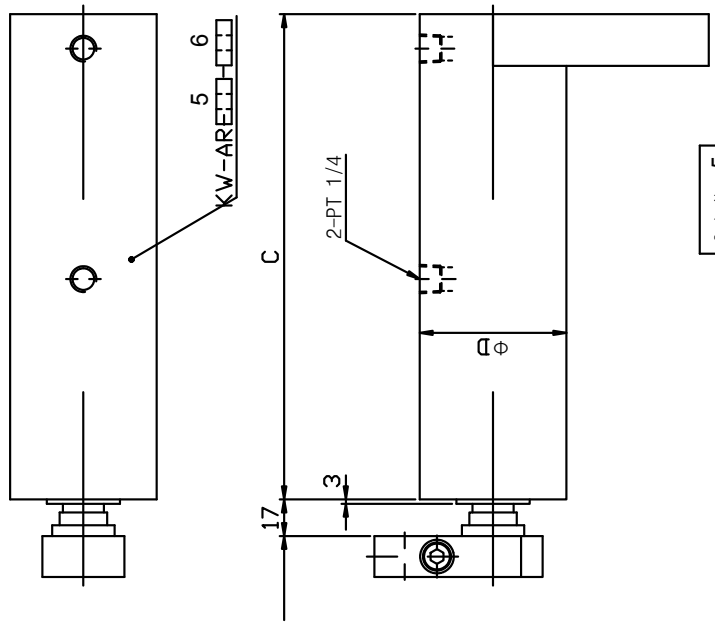
Code No. **6**

Area (cm ²)	φD (mm)	Air Force (kg/cm ²)	
		5	8
036	60	140	230
044	67	170	275
054	70	210	-
060	71	230	-
074	80	290	-
098	90	380	-



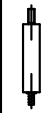


S1-4

S1-5 STUD TYPE GUN





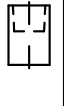

Air Port Position
Code No. 8

Code No. 5

Code	Type
A	
AF	
AR	

Rod Side Tip Type

Code No. **3**

Code	Type
D	
R	
F	
E	

Code No. **1**

Code	L
040	40 mm
050	50 mm
060	60 mm
070	70 mm
080	80 mm
090	90 mm
100	100 mm
110	110 mm
120	120 mm
130	130 mm
140	140 mm
150	150 mm

Cylinder & Electrode Force

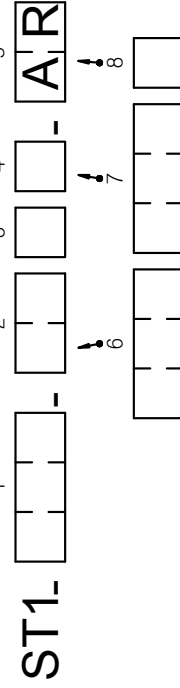
Code No. **6**

Area (cm ²)	φD (mm)	Air Force (kg/cm ²)	
		5	8
036	60	140	230
044	67	170	275
054	70	210	-
060	71	230	-
074	80	280	-
098	90	380	-

Code No. **7**

Code	C
038	174
050	198
063	224
076	250
102	302
127	352
152	402

Code No.



S1-6

S1-6