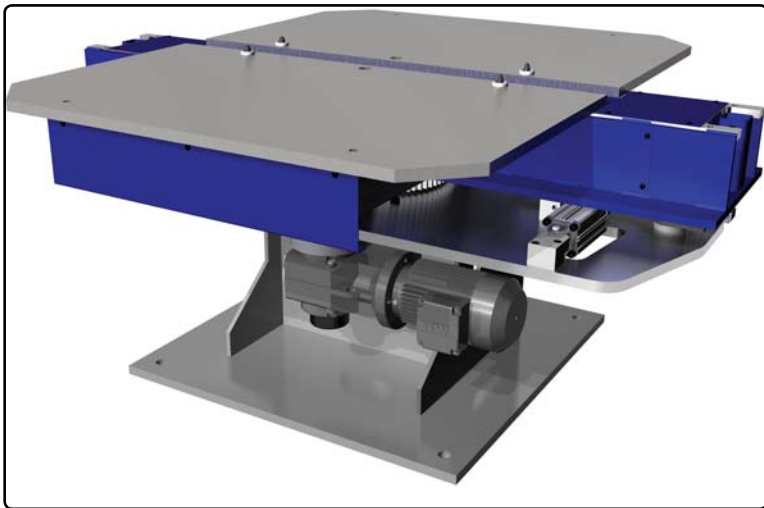


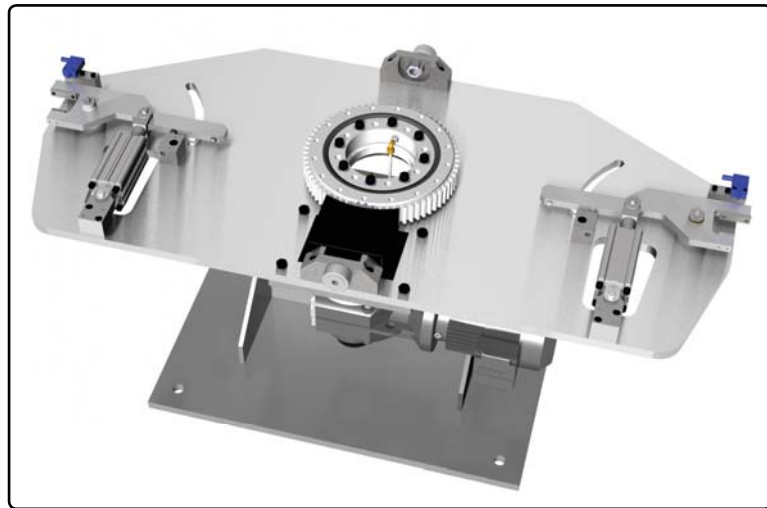
180° Indexing Turntable - T series

This Kyrus turntable is designed for repetitive two position indexing. The design uses a heavy duty slewing ring with our unique locking system that provides a very accurate and rigid system. Tooling plates are accurately positioned using location pins for quick and reliable change over.

The design allows for easy maintenance, as all cam locks are assessable without removing the tooling. Five standard sizes are available from 100 kg to 1000 kg per side.



Turntable base module
(with optional tooling plates.)



Unique table locking system for high accuracy positioning.

FEATURES

- Payloads from 100 up to 1000 kg per side.
- Swing diameter to 3600 mm.
- Large hole in centre for services.
- Designed for reaction loads (ie spot welding).
- Repeatability better than 0.05 mm.
- Tooling plate locations for accurate tool changes.
- Programmable speed for load matching.
- Table position switches.
- Central lubrication.
- Can be switched from powered to manual operation in the event of a motor failure.

Positioner Model	T 100SA	T 150P	T 250P	T 500P	T1000P
Max Swing Dia	1800 mm	2000 mm	2400 mm	3000 mm	3600 mm
Index Time (Seconds) 180	N/A	<3	<4	<5	<7
Load Radius	600	600	750	800	1000
Height To Table	800 mm	800 mm	800 mm	800 mm	800 mm
Table Re-peatability	<0.1 mm	<0.1 mm	<0.1 mm	<0.1 mm	<0.1 mm
Pay Load Per Side	100 Kg*	150 Kg	250 Kg	500 Kg	1000 Kg

*Table design is capable of taking 150 kg per side but installation conditions are subject to integrators risk assessment of working condition hazards.

Options available

- Tool plates standard or customer sizes.
- Pre wired 24 pin connectors (one on each side of turntable)
- External axis modules for fixture manipulation.
- Pneumatic valve modules within main beam for tool control.
- Centre guarding.

Also available as Semi Automatic system

For further information contact



KYRUS Europe GmbH
Föhrenring 3
85413 Hörgerthausen
Germany · Munich Area

Telefon +49 8764 9499173
Telefax +49 8764 948662
E-Mail info@kyrus.eu.com
www.kyrus.eu.com