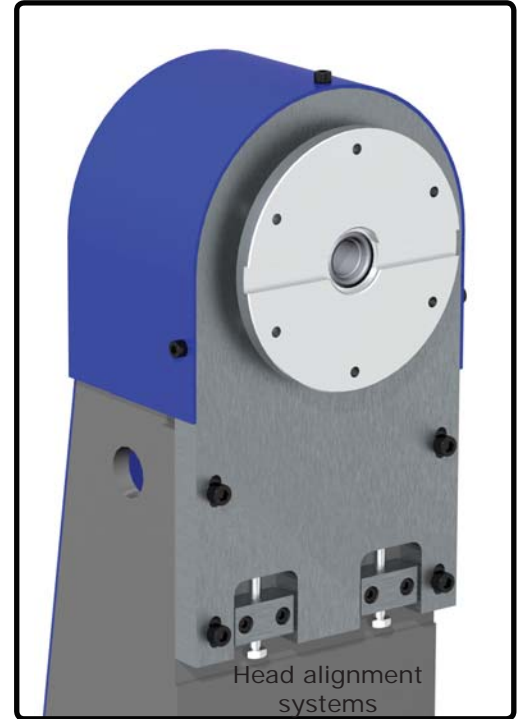
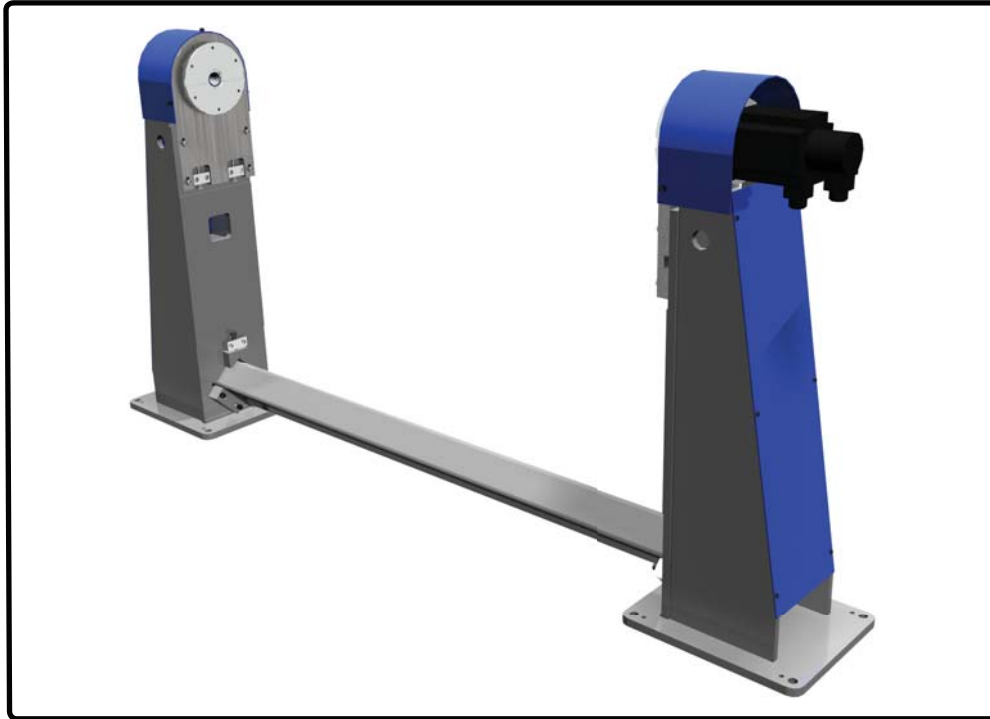


Head & Tail Stock Units -HT Series

The Kyrus head and tail positioner sets are designed to offer customers flexibility.

This system has a simple link bar design which allows easy setting of face plate distances. The individual head alignment systems allows for accurate alignment and can easily be put together.



SYSTEM FEATURES

- Modular component design.
- Flexible brace system.
- Drive heads adjustable for accurate alignment.
- Fully adjustable face plate centres.
- Motor mounts for all robot manufacturers.
- Sumitomo direct drive gearboxes on tooling drive to 500 kg payload and slewing ring drive to 5000 kg.
- Service hole in main index drive on slewing ring versions and tooling tail stock.
- Robot stands with link bars to positioner frame.
- Earth return modules.
- Strong backs.
- Quick release tooling adaptors.
- Non robot servo drive pack (ideal when using older robots).
- Available in our HiArc 500 series as complete robot systems (call for details).

For additional options please contact local distributor

For further information contact



KYRUS Europe GmbH
Föhrenring 3
85413 Hörgertshausen
Germany · Munich Area

Telefon +49 8764 9499173
Telefax +49 8764 948662
E-Mail info@kyrus.eu.com
www.kyrus.eu.com